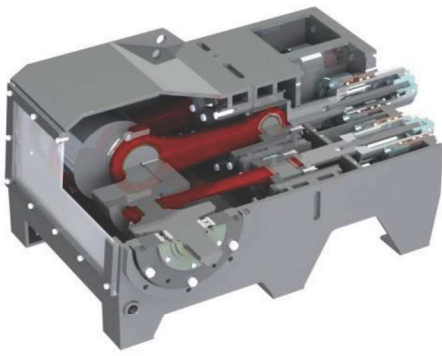




**TW 1500**

*HIGH FLOW TRIPLEX PUMP*





## Technical Features

Max power input / puissance max / maximale Kraft	220 kW	298 HP	
Max pressure / pression maximale / maximaler Druck	17 MPa	170 bar	2465 psi
Max flow rate / débit maximale / maximale Durchflussrate	1500 lt/min	396 gpm	
Piston diameter / diamètre du piston / Kolbendurchmesser	From 3" (76,2 mm) to 4"1/2 (114,3 mm)		
Stroke / Course / Hubweg	4,5" - 114,3 mm		
Maximum stroke rate / coup par minute / max Hub pro Minute	426 / min	426 spm	
Suction diameter / diamètre d'aspiration / Saugdurchmesser	5"	127 mm	
Output diameter / diamètre de sortie / Ausgangsdurchmesser	3"1/2	88,9 mm	

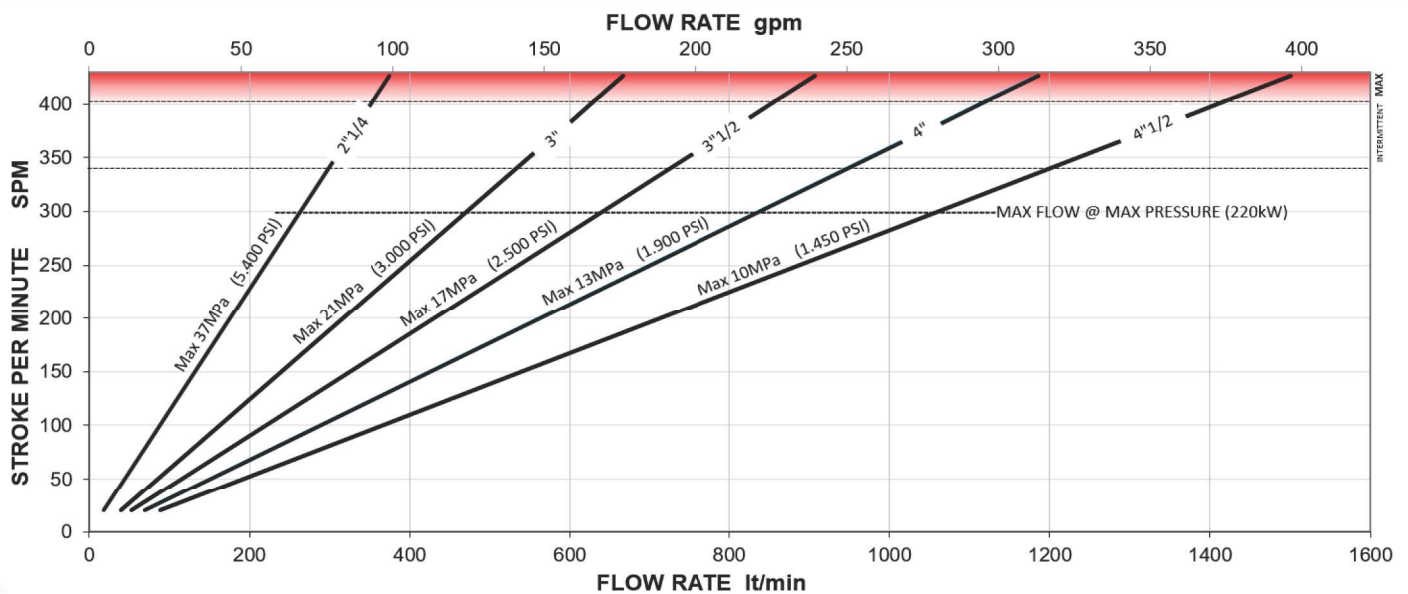
7" Control panel lcd monitor

### Bareshaft dimensions and weight

Width 991 mm - 3'3"	Height 590 mm - 1'11"	Length 1375 mm - 4'6"	Weight 1300 Kg - 2866 lb
---------------------	-----------------------	-----------------------	--------------------------

### Frame dimensions and weight

Width 2400 mm - 7'10"	Length 4600 mm - 15'1"	Height 2200 mm - 7'2"	Weight 6500 Kg - 14330 lb
-----------------------	------------------------	-----------------------	---------------------------



**tw tecniwell**

JET-GROUTING, GROUTING AND DRILLING EQUIPMENT

Via 1° Maggio, 61 - 29027 Podenzano (PC) - Italy - Tel. + 39 0523 524086

e-mail: [info@tecniwell.com](mailto:info@tecniwell.com) - [www.tecniwell.it](http://www.tecniwell.it)

**Colli**  
EQUIPMENT

All technical data are purely indicative and subject to change without notice

